



Umina Beach Public School Newsletter

Term 4, Week 2, 2023

DIARY DATES – TERM 4

| | |
|------------|---|
| Tue 17 Oct | Tonight - P&C Disco |
| Fri 27 Oct | Cake stall by Social Projects. Yrs 3-6 requested to donate cakes |
| Wed 1 Nov | Year 5 vote for School Leader candidates |
| Thu 2 Nov | 2024 Parent information @ Umina Campus 5:00pm |
| Mon 13 Nov | School Musical Cast A. Matinee & evening |
| Tue 14 Nov | School Musical Cast B Matinee & evening |
| Thu 16 Nov | Kindergarten 2024 – Early Bird sessions begin Yrs 3-6 Family Curriculum Info session |
| Sat 25 Nov | Santa photos at UBPS |
| Fri 1 Dec | Year 6 Mini Fete |
| Fri 8 Dec | Presentation Day |
| Mon 11 Dec | All school PARTY DAY |
| Thu 14 Dec | Year 6 Farewell |
| Fri 15 Dec | Year 6 arch farewell LAST DAY FOR STUDENTS 2023 |

From the principal

From the Principal – Term 4, Week 2

Welcome back to Term 4: we've hit the ground running, ready for an exciting and action-packed term! You might have noticed that your children were a little tired at the end of Week 1 – our teachers were, too! With daylight savings bringing changes to daytime and night-time routines and the transition from holiday mode to school term sleep patterns, it's easy to feel tired. Re-establishing bedtime routines is important for us all, as we head into a busy term!

We were very excited to return to school and see some updates to our shared spaces, particularly the COLA and main quad area. The work was motivated by the need to address some unsafe, uneven surfaces, improve drainage around the school and, most importantly, increase functional, useful and inviting play spaces for our students. The green space is so welcoming, and we absolutely love our new gardens and sandstone seating: we'll enjoy watching the Tuckaroo's grow up and provide wonderful shade to sit under. Our new netball court is a great addition to our school and it's great that our students can safely run and play, or sit and play quietly, in this new space. The next phase of our upgrade will be to resurface our COLA to complete the transformation and we'll work with our assets team in the near future to plan this.

You'll notice that SINSW and our local assets team have worked very hard in the holidays to level our K-2 area, install geo-fabric and lay new turf, which has taken very successfully in the short time. Our GA team are working hard to ensure the turf remains healthy and strong this term, whilst our back oval remains fenced off. Whilst some parts of the K-2 playground remains fenced off, we've re-introduced some additional, levelled play areas by laying synthetic turf in two large sections, increasing the available play space for our students (who are loving the new soccer nets area allowing two soccer games to be played at each break, accommodating both senior and junior students). The removal of the old, unsafe playground has opened up more usable space as well, which has been a bonus while our play space is compromised.



As you will read further in the newsletter, SINSW has been directly working with the school as an extensive remediation plan is developed to safely manage asbestos-in-ground at UBPS. This process is extensive and requires significant time and focus to be completed. In the meantime, I can assure you that the safety of our school community remains our immediate and sustained priority. I can assure you that our staff have worked vigilantly to ensure all management protocols have been meticulously followed, and will continue to be followed, for the safety of our students, staff and visitors.

We are aware of the history of our school and our specific site location on which our buildings and playgrounds were built. As we enacted all responsibilities of our Asbestos Management Plan this year, our site inspections (which often follows heavy rain or significant weather incidents), resulted in small fragment

finds associated with building waste such as tiles and bricks. These fragments were in good condition, which means they cannot be crumbled using light pressure; however, we recognise that even the smallest traces of asbestos containing materials can be an unsettling experience for our school. It is my goal to reassure our community, knowing that we are working tirelessly towards a complete, thorough, and final remediation plan for our school site. The end result will secure significant upgrades which will include safe and functional play spaces designed to meet both environmental and school needs, with an enduring focus on the needs of our students. To achieve this, the timeline will be lengthy, particularly considering the significant size and scope of the works.

Our enduring focus on safety also requires some compromises as we work toward our end goal: this includes the Year 3-6 oval remaining fenced off for Term 4. This is in strict accordance with Safe Work NSW and all applicable legislation, regulations, policies, and guidelines, including the Department's Asbestos Management Plan for NSW Government Schools. This term, we will be using all other school spaces (and the adjacent council oval) for all play, fitness and sport activities.

Next steps for the school involve engaging with consultants to develop a design which encompasses all work needed to fulfill all recommendations of our remediation action plan. I will continue to update our community and, as soon as possible, will confirm timing for remediation once the design is complete and scope of work is approved. If you have any questions about the planned works, please contact School Infrastructure NSW on 1300 482 651 (during business hours) or email SINSW on the following address: schoolinfrastructure@det.nsw.edu.au

Whilst the work goes on outside our classrooms, it is important to be reminded of the incredible work taking place within our classrooms, and Term 4 is the perfect time to review and reflect on the wonderful progress of our students this year. Teachers have commenced our important assessing and reporting period and are engaging in the important work of planning how best to support our students further in 2024. As we consider optimal class groupings for 2024, our teachers take considerable time to review and consider the individual academic and social-emotional needs of all students. We also offer parents and carers the opportunity to provide any specific thoughts which you would like our teachers to consider when staff are forming classes for 2024. All information provided by parents and carers will be considered but should not be viewed as guaranteed. If you have any information considered pertinent to your child's class placement next year, including social, emotional, physical or academic factors, please complete our [online form](#) by 3:00pm Monday 23 October.

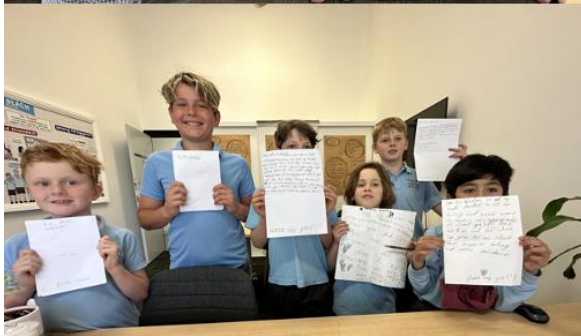


Have a great week at our school!

X Mrs W

Great students at our school!

We are so lucky to have so many wonderful students at our school who are striving for excellence in their learning! A huge congratulations to Elsie on her recent triumph in public speaking: what a superstar! I loved seeing the excitement and support KM's beautiful classmates showed her, as well as the support of the entire school community: we could not be prouder! I was also so proud of my visitors from 2/3T who wrote the most compelling, persuasive, and well-structured arguments as to why the school should allow tree climbing at school. I was particularly impressed by their argument development and positioning, including the idea that tree climbing encourages risk taking and helps develop confidence! Student risk taking and confidence are two goals I hope to see all our students achieve in their time at UBPS, although I'll need to spend a little more time considering the tree-climbing proposal. I was also delighted with a lovely visit from Archie who totally wowed me with his mathematical reasoning and working, as well as Lucy KC and Violet KA who shared such outstanding, sophisticated writing that I honestly thought they were in Year 1 (or even Year 2!). What great learners we have in our school!





Speaking of great students...

I was so thrilled to spend the day yesterday with Coralie 5C and Levi 5K at a special day of learning involving primary and high school students and teachers from across the Central Coast. The focus of the day was on student voice and I look forward to Coralie and Levi sharing their thoughts on the day with our community in our next newsletter, as I have no doubt that they will be able to articulate the purpose of the day and the outcomes just as clearly as I could attempt! Coralie and Levi were outstanding representatives of our school and demonstrated such a high level of engagement and understanding throughout the day. Both students provided such well-thought-out responses to all (very complex) questions sent their way and had some very innovative, relevant ideas on how we could work at our school to increase authentic opportunities for students to share their voice and be active, involved and vocal contributors in decision-making. Coralie and Levi: I can't wait to see how you continue to impact our school in powerful and meaningful ways as you champion student voice in our school.

Tell Them From Me parent survey

Frequently Asked Questions (parents and carers)

Centre for Education Statistics and Evaluation

1. What is the Partners in Learning parent survey?

The Partners in Learning parent survey is part of the *Tell Them From Me* suite of surveys on student engagement. The parent survey helps to clarify and strengthen the important relationship between parent and school.

The survey is designed to measure, assess and report insights from the parent point of view at the school and system levels. The focus of this NSW survey is on student wellbeing, engagement and effective teaching practices.

2. What kind of questions will the survey ask?

The survey questions aim to understand parents' perspectives on their child's experience at school, including teaching, communication and the school's support of learning and behaviour. The survey also aims to understand parents' perspectives on activities and practices at home related to their child's learning.

The survey will ask parents questions about:

| | | |
|------------------------------------|----------------------------------|----------------------------------|
| Parents feel welcome | Parents are informed | Parents support learning at home |
| School supports positive behaviour | Safety | Inclusion |
| Communication preferences | Parents' participation at school | School supports learning |

3. How have schools been selected to take part?

The survey is open to all NSW government schools at no cost to them. Your school has decided to participate.

4. How will taking part in this survey benefit my child's school?

The parent survey provides school principals and school leaders with parents' perspectives on their school as well as learning at home. Communication between parents and staff, activities and practices at home, and parent views on the school's support of learning and behaviour help build an accurate and timely picture that schools can use for practical improvements.

Data collected from the survey responses are quickly compiled into reports for school leaders. Principals can then use this information to help them identify emerging issues and plan for school improvement.

5. How does the parent survey relate to the student survey?

The parent survey is complementary to the *Tell Them From Me* student survey that your child may have been asked to complete. These surveys are offered (along with a teacher survey) to ensure schools can capture the views of students, teachers and parents.

For more detail on each of the surveys, see the survey website: <http://surveys.cese.nsw.gov.au/>

6. What do I need to do to participate in the survey?

The survey typically takes 15 minutes and is conducted entirely online through a secure website operated by the survey developers, *The Learning Bar*. You can complete the surveys on desktop computers, laptops, ipads, tablets and smartphones. You will be provided with a link to complete the survey at home or your school may make computers available so that you can complete the survey during school hours. This link will be distributed to you by your school during Term 3.

7. Do I need to participate?

No, participation in the survey is optional. Whilst your responses are very much appreciated, if during the survey, you feel uncomfortable, you can stop the survey at any time. The majority of questions in the survey can be skipped.

8. Will the school be able to identify me or my child from my responses?

Survey responses are anonymous so staff in schools will not be able to identify individual parents or students from parent responses. Data suppression rules are applied to the school reporting tools where there are fewer than five responses. In other words, schools only see responses to questions which have been answered by five or more parents.

9. What sort of analysis will be done of the survey data?

Once the surveys are completed, reports are prepared and in most cases are available to schools within three business days. School leaders can use the data to better understand the experiences and views of parents at their school.

CESE will undertake state-wide analysis of the survey data in conjunction with existing student data held by the department, including performance data. The results will help all schools better understand the relationship between

parents and students' engagement, students' wellbeing, effective teaching and student learning. Results from CESE's analysis of this data will also help teachers and principals discuss what works to improve student outcomes. This supports the department's continuing focus on quality teaching and leadership. The data will be retained for future analysis to help us better understand the nature of student engagement and wellbeing over time.

10. When will the Partners in Learning survey happen?

The surveys will be conducted in all participating schools between Term 3 and Term 4.

This Term, our school will be participating in the *Partners in Learning* parent survey, another part of the *Tell Them From Me* suite of surveys (student, teacher and parent surveys) on student engagement. The survey asks parents and carers questions about different factors that are known to impact on student wellbeing and engagement.

Running this survey will help our school understand parents' and carers' perspectives on their child's experience at school. These include communication between parents/carers and staff, activities and practices at home and parent/carer views on the school's support of learning and behaviour. This valuable feedback will help our school make practical improvements.

The survey is conducted entirely online on smartphones, iPads, tablets, laptops, or computers, will typically take 15 minutes or less to complete and is completely confidential. The parent survey will be open until 3 November and your responses are very much appreciated. The link to access the survey is:

<http://nsw.tellthemfromme.com/...>

This time last year we had about 120 families complete the survey, let's see if we can reach at least 200 this year! The more families that complete the survey, the broader the feedback we can act on. Attached is a parent / carer fact sheet for more information. For parents picking up their children from school, we will have posters around the school with a QR code so you can complete the survey while waiting.



Written by Jeff Bonnor

Music by Pat Farrell

The school musical “**Global Worming**” (performed by every student in Years 3-6), is coming up in Week 6. There will be 2 night-time performances with 2 different casts of main actors. **Tickets will go on sale soon.** Both musicals will be professionally filmed and copies will be available for purchase.

Performances

There will also be two matinee performances. (They are on the same day as the evening performance).

CAST A will be on Monday 13 November

CAST B will be on Tuesday 14 November.

Times and ticket prices will be announced soon.

Cast A will be performing on **Monday 13 November, 7:00pm.**

Cast B will be performing on **Tuesday 14 November, 7:00pm.**

On the nights of the performances:

- Main actors need to arrive at 6:00pm the night that they are acting.
- All other students need to arrive at 6:15pm **the night that their class is dancing.**
- **Every student in years 3-6**, will be on stage dancing with their class on one of the nights.
- **Every student in years 3 and 4 (Stage 2)**, are required for **both nights** of performances because they will **also** be singing in the choir on the night that their class is **not** dancing.
- Please check the night that your Year 3 or 4 child's class is **dancing or singing** so you know which night your child needs **to arrive in costume.**
- Due to the large scale of the performance, it was not possible to coordinate students in the same family all performing on the same night. This means it may be confusing as to which night your child is on stage, so please double check with your child's teacher if you are unsure.

Costumes

- Most of the costumes will be provided and students will need to be responsible for taking their costume home and getting ready at home in costume on the night they are performing.
- When singing in the choir, students should wear dark coloured clothing. Please note, the school musical choir is only made up of Stage 2 students, no students from Years 5 or 6.

Main actors may need to join a class other than their own for dancing, if their own class is dancing on the same night that they are acting. Main actors are also invited to join the choir on the night that they are not acting if they wish.

Comedy Club Extras (i.e., students holding signs (but have no dialogue), doing the Welcome Speech, Acknowledgement to Country as well as Prompters) are required on stage for both nights and will need to change into their dance costume throughout the night to dance with their class. They are also invited to join the choir if they wish.

Costume requirements

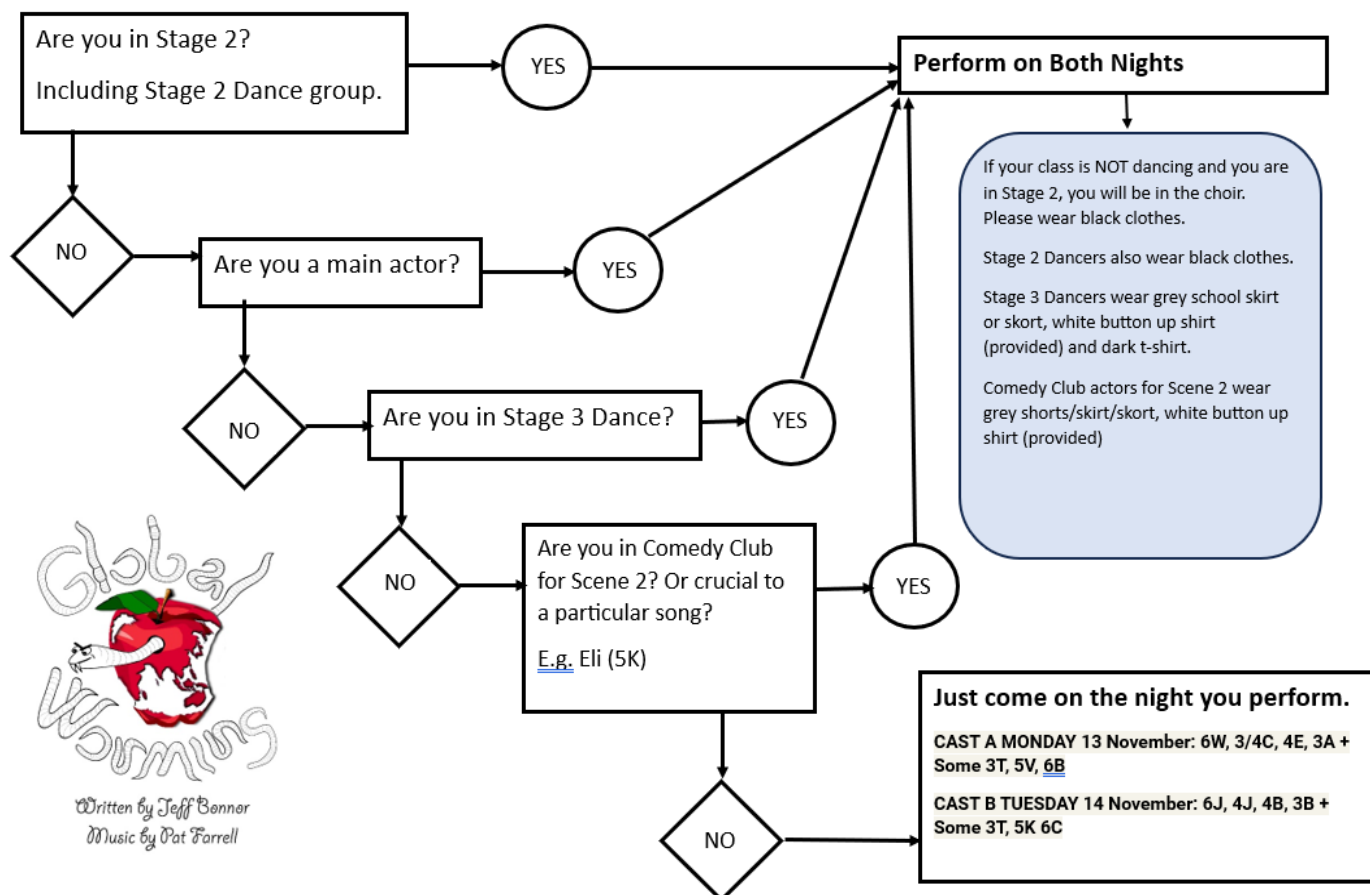
(Items in BOLD with BYO next to them must be supplied by students)

| Song | CAST A Monday 13/11/23 | CAST B Tuesday 14/11/23 | Costume GIRLS | Costume BOYS |
|----------------------------|------------------------------|-------------------------------|---|--|
| No More Teachers | 6W | 6J | <ul style="list-style-type: none"> White shirt (provided) Red tie (provided) School skirt/skort (BYO) White socks (BYO) Black shoes (BYO) | <ul style="list-style-type: none"> White shirts (provided) Red tie (provided) School shorts (BYO) White socks (BYO) Black shoes (BYO) |
| Boot Camp | 3/4C | 4J | <ul style="list-style-type: none"> White t-shirt (provided) red shorts (provided) white socks (BYO) sneakers (BYO) | <ul style="list-style-type: none"> White t-shirt (provided) red shorts (provided) white socks (BYO) sneakers (BYO) |
| Substitutes | 4E | 4B | <ul style="list-style-type: none"> White shirt (provided) Black singlet top (provided) Pink socks (provided) Glasses (provided) Black or dark skirt (BYO) | <ul style="list-style-type: none"> White shirt (provided) Black vest (provided) Tie (provided) Glasses (provided) Black or dark long pants (BYO) |
| Procrastination | 3A + 3T | 3B + 3T | <ul style="list-style-type: none"> White shirt (provided) Red tie (provided) School skirt/skort (BYO) White socks (BYO) Black shoes (BYO) | <ul style="list-style-type: none"> White shirt (provided) Red tie (provided) School shorts (BYO) White socks (BYO) Black shoes (BYO) |
| We Don't Need no Education | 5V | 5K | <ul style="list-style-type: none"> White shirt (provided) Red tie (provided) Dark t-shirt (BYO) School skirt/skort (BYO) Any socks (BYO) Sneakers (BYO) | <ul style="list-style-type: none"> White shirt (provided) Red tie (provided) Dark t-shirt (BYO) School shorts (BYO) Any socks (BYO) Sneakers (BYO) |
| The Worm is Turning | 6B | 5C | <ul style="list-style-type: none"> Black plain t-shirt (BYO) black tights (BYO) | <ul style="list-style-type: none"> Black plain t-shirt (BYO) black long pants (BYO) |
| Wiggle It! | Stage 2 dancers | Stage 2 dancers | <ul style="list-style-type: none"> Black plain t-shirt (BYO) black tights (BYO) | |
| Wednesday (Bloody Mary) | Stage 3 dance group | | <ul style="list-style-type: none"> White button up shirt (BYO) Red tie (provided) Dark t-shirt (BYO) School skirt/skort (BYO) Any socks (BYO) Sneakers (BYO) | |

| | | | | |
|---------------------|----|----|---|---|
| We'll Listen to You | 4E | 4B | <ul style="list-style-type: none"> White shirt (provided) Red tie (provided) School skirt/skort (BYO) White socks (BYO) Black shoes (BYO) | <ul style="list-style-type: none"> White shirts (provided) Red tie (provided) School shorts (BYO) White socks (BYO) Black shoes (BYO) |
|---------------------|----|----|---|---|

THIS MAY MAKE IT EASIER FOR PARENTS TO UNDERSTAND

Flow Chart for Performances



Written by Jeff Bonner
Music by Pat Farrell

YEAR 6 INFORMATION

Save the Date

Year 6 End of Year Celebrations

Friday 1 December

MINIFETE

Thursday 14 December
@ 5:30pm

YEAR 6 FAREWELL

Friday 15 December

@ 2:30pm

YEAR 6 GRADUATION
CEREMONY AND ARCH

As we enter the last term at Primary School for our Year 6 students, we are starting to finalise plans for their end of year celebrations. Each of these events are organised to create great memories for our students and to celebrate their Primary School journey. The Year 6 Farewell will include dinner and a disco for students only. The following day we will hold a celebration ceremony for Year 6 and their parents where they will receive their Graduation Certificate. After this ceremony students will walk through the arch.

Thank you in advance for your support. If you have any questions, please contact your child's teacher.

YEAR 5 INFORMATION

Our Students Leader selection process began yesterday with a talk to Year 5 students about 'Being a Leader' and how the Student Leadership process works. Information will be sent today via the Parent Portal and all students will receive this information explaining the steps involved. It is important that the process is followed. If there are any questions, please contact Mrs White.

INTENTION TO APPLY FOR YEAR 7 PLACEMENT IN A SELECTIVE HIGH SCHOOL IN 2025 ATTENTION PARENT/CARER OF CURRENT YEAR 5 STUDENTS

Selective high schools cater for high-potential and academically gifted students who may otherwise be without sufficient classmates at their own academic standard. Selective high schools help these students learn by grouping them with students of similar ability, and by using specialised teaching methods. If you would like to have your child considered for Year 7 selective **high school entry in 2025**, you need to apply on the internet using a valid email address (not the student's email address).

Detailed instructions on how to apply and the link to the online form are at the [Selective high schools and opportunity classes Year 7 website](#) or read through the attached information booklet.

Applications open on **9 October 2023** and **close on 20 November 2023**. You must apply before the closing date. Please email Mrs White: colleen.a.white@det.nsw.edu.au to provide advice to the school that you intend to apply (or have already applied). The school CANNOT apply on your behalf.

The Selective High School Placement Test will be held on Thursday 9 May 2024.

If you have any questions, please email Mrs White: colleen.a.white@det.nsw.edu.au or ring our office on 43 411630 to request a call back from Mrs White.

CAKE STALL



We are holding a cake stall next Friday 27 October, to raise funds for a food pantry at school to support families and children in our school community. **We are asking families in Years 3, 4,5 and 6 to send in cakes, slices, biscuits or muffins to be sold at the stall.**

We ask that an ingredients list for anything homemade be included for allergies and intolerances. Please bring donations to the Primary COLA in the morning.

All children will have the opportunity to buy something sweet. Prices are 50c, \$1.00 or \$2.00.

Social Projects is our High Potential Gifted Education group for students keen to further their social and emotional skills. They are very excited to organise this event!

LIBRARY NEWS

Thank you to all the students who completed the Premier's reading challenge last term. These students will receive their certificates later in Term 4 when the Department of Education sends them.

Book Club went home to interested students last week. This is the second last Book Club for the year and payments close Friday October 27. I have suggested to some students who have been enthusiastically circling many books, that maybe they could ask for some for Christmas as that time is fast approaching.



Our P&C have organised a lovely surprise Week 6 and 7, November 13 to the 24. A Butterfly enclosure is being delivered to the library and the students will have the opportunity to watch them hatch from their chrysalis. Students can observe the butterflies during library lessons and at lunch time. Younger siblings are welcome to come into the library after school to have a look each day with their parents.

Mrs Deas -Teacher – Librarian



HUNTER KIDS UMINA BEACH VACATION CARE WEEK ONE

Welcome Families,

Hunter Kids has created a Vacation Care Blog for families to be involved in the educational teachings and activities in the service. The program caters for all children's likes, interests, beliefs towards their individual life skills and their surrounding environment. The program engages their thoughts and opinions to the Program for Vacation Care in the Service.

VACATION CARE WEEK ONE



ARE YOU INTERESTED IN JOINING THE SCHOOL BAND?

Band recruitment will be commencing in the next few weeks!

Umina Beach Public School provides a wonderful music enrichment program to cater for the needs and interests of all students. In 2024, students in Year 3 to 6 will have the opportunity to enrol in either the Concert or Training Band. The school enlists the services of the Central Coast Conservatorium of Music who provide the school with professional musicians that are experts in their own field. They also organise the purchase of music, provide information on instruments and other musical equipment. The bands play all types of instrumental music and learning is tailored to meet the differing abilities and experience of students.



What is Training Band?

No musical knowledge is required, just a love of music and a genuine desire to play an instrument! It offers the opportunity to work together in a band and learn the basics of playing an instrument.

What is Concert Band?

This is the most senior band in the school with students ranging from Years 4 to 6. Students are invited to join this band when a conductor from the Conservatorium deems them ready to take on the level of commitment of reading and playing harder pieces of music.

Whole Band Rehearsal

Whole band rehearsals are held weekly for an hour, and this is where students learn how to play together as a band. Rehearsal is usually before school, at 8:00am in the hall.



Tutorials

Students are given a half hour tutorial weekly, where they are given practical lessons on their instrument in a small group of up to 4 students. They learn how to read notes and scores and work their way through technical music books.

YEAR 1 SCIENCE EXCURSION

As part of our Science Unit, Living Things, 1C, 1H and 1P explored Kincumber Mountain in the last week of Term 3. We engaged in a hunt for mini beasts in the ground cover, identified birds based on their appearance and sound, and attempted to make a bird's nest only using tweezers to mimic a beak. Everyone had a great time, even in the scorching hot weather. A highlight of the day was when 1C saw a monotreme lizard with prey in its mouth. We were all extremely quiet as we passed by so that he stayed focused on his prey.

We look forward to hearing how much fun 1G and 1F have when they get to go. Unfortunately, fire bans have caused their days to be postponed but we are working hard with the staff from Rumbalara to plan a future date for the students.



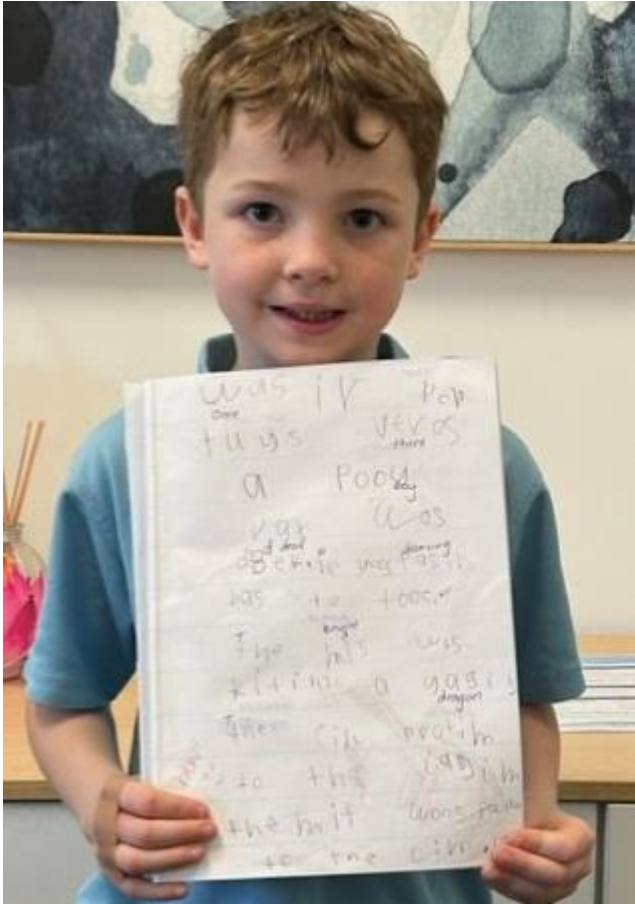


U8s Umina Eagles W1 Football Team hit the Sydney international Cup over the October long weekend. They played 7 rounds and, in the end, ranked 13th out of 26 teams. Walking away with four wins, two draws and just one loss! Outstanding effort for a community club team.

Shae, Johnny Ray, Mason & Jed from Year 2 - we are proud of you!



Over the holidays, Callan represented Umina in the 2023 NSW Primary Athletics Challenge run by Athletics NSW. He won gold in discus and shot put. Well done Callan – we are proud of you!



James has been working really hard in writing. Check it out! Well done on a great improvement James!
Cora, Zeke, Tilly, Landon and Digby have been working collaboratively and creatively to build model towns.
Amazing job 1/2P!



SAVE THE DATE - CURRICULUM INFORMATION SESSION 3-6

On Thursday 16 November, Year 3-6 families are invited to attend a 2024 Curriculum Information Session in the school hall. The session will begin at 9:30am and run for approximately one hour. The session will cover the new mathematics and English syllabuses, and the significant changes being made to teaching and learning next year.



Return and Earn at UBPS



Return recyclable drink containers to the special bins around the school so we can raise money to support our school based community pantry.

**STRICTLY NON-ALCOHOLIC
CONTAINERS ONLY**

The students in "Social Projects" are running a Return and Earn program at UBPS. We are asking students and families to recycle Up & Go containers, poppers, soft drinks, flavoured milk and water bottles by placing them in the special bins around the school. We will trade these bottles for vouchers to provide food for children at school when needed.

Please make sure bottles are empty before placing in bins. We thank you for your support of this sustainable project. Social Projects and Ms McLean

Mr Buist's
HORRIBLE
and not so horrible
HISTORIES

EXCURSIONS - PART THREE

An excursion that was a once in a lifetime experience was in 2000, when we took the whole school to Olympic Park at Homebush for the Paralympics. This was an amazing time in Sydney. Only a few weeks previously, we'd just finished what has been referred to numerous times over the years as "the best Olympics ever". The children's school holidays did not occur as normal because they had to fit in with the Olympics. From memory I think it meant we had a shortened Term 3 (about 8 weeks) and a longer Term 4 (about 12 weeks). We'd had the torch relay for both Olympics and Paralympics come to the school in the weeks leading up to them and so everyone was feeling very excited to be attending. It was an absolutely wonderful day-made even more memorable for us when we got to see one of our Aussie athletes win a gold medal in athletics at the main stadium. It is a day I shall never forget.

There used to be a place called "Old Sydney Town" which was just up near where the Australian Reptile Park is. Each year, the children in Year 4 would dress up in clothes like they used to wear in the convict times and visit Old Sydney Town for the day. One of the most memorable experiences for both the teachers and the students, was when the children went to the old schoolhouse, and they were taught by a schoolmaster who taught in the style that would have been used back in the early days of Sydney. This schoolmaster would walk around with a cane in his hand and he would get the kids to say their times table. It always made the kids jump when the school master would start to whack one of the desks with his cane to keep the beat. He would also ask the children to read some words. Now back then they used to write the letter "S" in a way that it looked like an "F", so you might be able to imagine the confused looks on the children's faces when they asked to read a word like "feast" when it's actually written in a way that looks like "feaf^t", or when "fish" is shown as "fi^jh^h"!

As well as being an awesome excursion- the children all came back to school with a sense of how lucky they were to have the teachers they have these days!

Here are a couple of those words for you to try to work out which have the "s" looking like an "f". ^jhort (hint not tall); ^jent; ^jtand; the^je; and a toughy to end with - fu^js

Umina Beach Public School

Works notification | 17 October 2023

Dear staff and parents/carers,

We are refurbishing the flooring of several classrooms and a storeroom in Building G at Umina Beach Public School. As part of this work, asbestos containing vinyl tiles located under the carpet will need to be removed.

We are also removing a small section of the wall lining known to contain asbestos material located behind the fireplaces in classrooms in Building G.

The rooms continue to be safely used as the vinyl tiles and wall lining are undisturbed and the tiles are under the carpet.

This work will take place on Saturday 11 November 2023, outside school hours. Work areas will be cordoned off, and additional safety measures and monitoring will be put in place under the advice of an independent hygienist before works start. They will remain out of bounds until the work is finished.

Work will be done in accordance with SafeWork NSW regulations and the NSW Department of Education's Asbestos Management Plan. All work will be completed by licensed and accredited asbestos contractors and monitored by occupational hygienists in strict accordance with all applicable legislation, regulations, policies, and guidelines.

The areas will be inspected to ensure they have been fully remediated, and the school will receive a clearance certificate before the rooms are reopened to students and staff.

The health, safety, and wellbeing of the school and the local community is our highest priority. Thank you for your cooperation during this important work.

Umina Beach Public School

Information pack | October 2023

You may have seen fenced areas at Umina Beach Public School and received notifications about fragments of asbestos containing material. This information pack summarises how we're managing asbestos in ground at your school, including recent work done over the school holidays and how we're supporting ongoing access to play space.

Managing asbestos in ground at Umina Beach Public School

Umina Beach Public School has a site-specific asbestos management plan in place for known asbestos in ground and have been following the regular inspection and management protocols within this plan.

From July 2023, these regular inspections, including increased inspections following some rain events, meant that a number of fragments have been found.

We have been working with an independent hygienist throughout and have kept the community updated through Works Notifications. Some areas where fragments are found had access restricted by fencing while work took place in line with hygienist recommendations, then cleared and reopened.

We have engaged the hygienist to prepare a Remediation Action Plan (RAP) to undertake large-scale remediation activities and update the site-specific Asbestos Management Plan for the school.

Update since our last notification end of Term 3

In the most recent notification (13 September 2023) we let you know that we are continuing to work closely with independent occupational hygienists, as well as licensed and accredited asbestos contractors to manage fragments containing asbestos materials in grounds at the school.

Since 13 September we fenced off some additional areas following fragment finds.

The fragments found in the soil at Umina Beach Public School are those associated with building waste such as tiles and bricks. These fragments are bonded asbestos and in good condition, which means they cannot be crumbled using light pressure. There is no evidence of other contaminants in the soil following visual inspections by the independent hygienist, in accordance with SafeWork regulations. Air monitoring in place from 14 September returned results below minimum reportable levels.

During the Spring school holiday period we did work in some play areas to prevent further erosion so they can remain open for students. Temporary fencing will remain in place in some areas. See below for more information and the map for detail.

We continue to work with the hygienist on planning remediation work at the school. See below for more information on next steps.

Measures to maximise outdoor play space

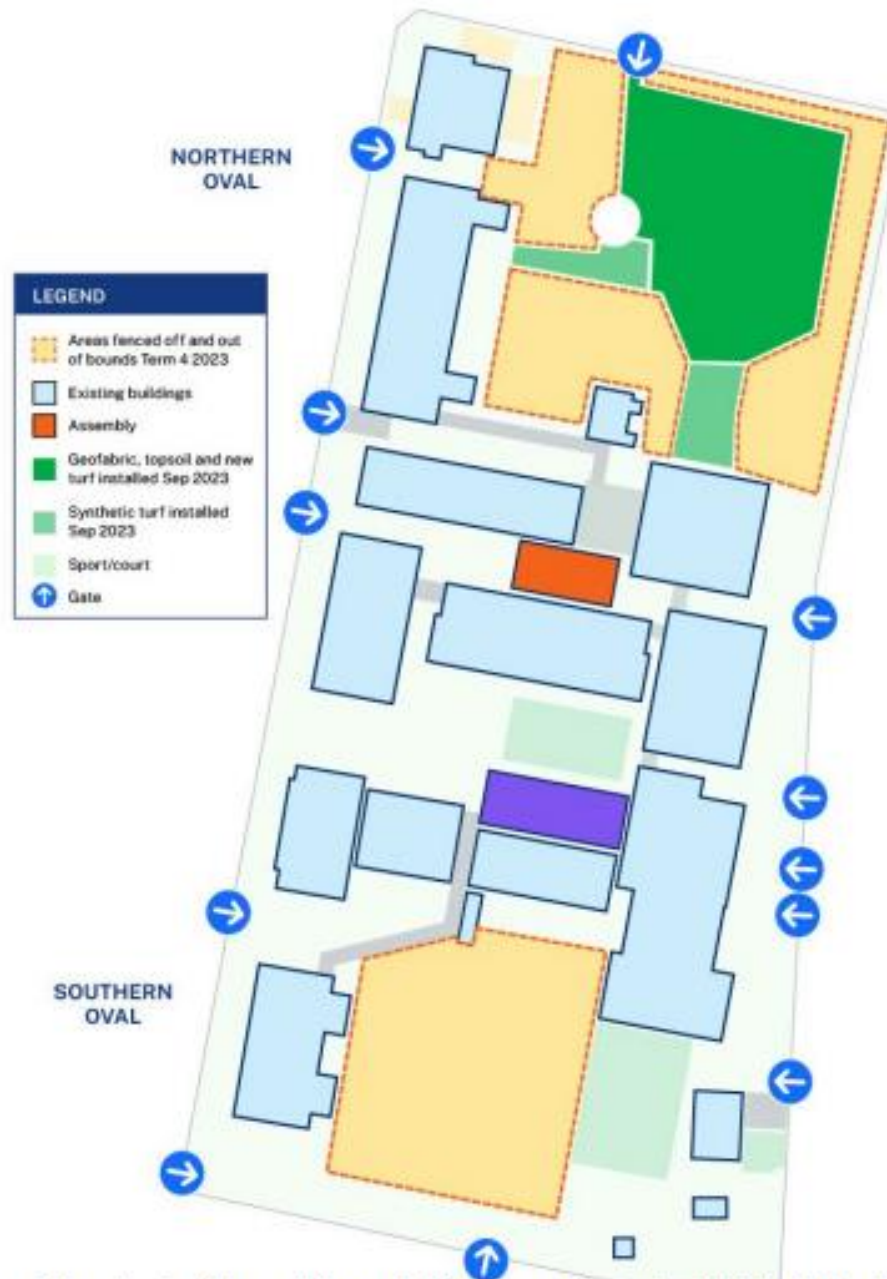
Over the Spring school holiday period we did minor works under advice of the hygienist to prevent further erosion of the ground and keep as much of the outdoor play space open. The map overleaf shows these areas.



This work included:

- removing the play equipment in the middle of the oval to create more open play space area for students
- installing geofabric and placing 100mm topsoil before returfing the majority of the Northern oval so it can continue to be used
- installing synthetic grass on high traffic areas where turf is unlikely to be successful and that will provide all weather access to the oval space.

A planned maintenance project to create more functional open play space for students in the central quad, with synthetic turf and a sports court, was also finished during the Spring school holidays.



Some areas of the school will remain fenced off and out of bounds, which includes the Southern oval.

The school has secured an ongoing booking with Central Coast Council to use the council oval next to the school if required. The school will manage access and supervision and will provide more information about these arrangements.

Remediation Action Plan

The independent hygienist has developed a Remediation Action Plan (RAP), which details recommendations for remediation to the school grounds. This is being reviewed.

Next steps are that we will engage consultants to start the design for work needed to fulfill the recommendations of the RAP. We will be able to confirm timing for remediation once the design is complete and scope of work is approved.

We understand the importance of keeping you up to date and will continue to share information with the community.

If you have any questions about what was found or the planned works, please contact School Infrastructure NSW on 1300 482 651 (during business hours) or schoolinfrastructure@det.nsw.edu.au.

More information about how we manage asbestos containing material at Umina Beach PS

The health, safety and wellbeing of students and staff at our more than 2,200 schools is always the Department of Education's highest priority.

We acknowledge that even the smallest traces of asbestos containing materials can be an unsettling experience for our school communities.

Where the presence of asbestos is discovered in a school, as with all hazardous material on public school sites, this is managed in strict accordance with Safe Work NSW and all applicable legislation, regulations, policies and guidelines including the Department's Asbestos Management Plan for NSW Government Schools.

The Asbestos Management Plan covers how asbestos is managed on school sites, organisational responsibilities, removal and remediation procedures and ongoing asbestos management. Some schools also have site specific management plans for asbestos in ground.

The Umina Beach Public School Asbestos Register and current site-specific management plan for asbestos in ground are published on the SINSW website Asbestos Register pages (alphabetically): <https://edu.nsw.link/asbestosregister>

All works notifications and information packs like this are also published on the SINSW website, on the Umina Beach Public School webpage: <https://www.schoolinfrastructure.nsw.gov.au/schools/3/3995.html>

If you have more concerns

Individuals concerned about exposure can also record their details on the National Asbestos Exposure Register.

The register is managed by the Australian Government's Asbestos Safety and Eradication Agency, which was created so that members of the community who think that they may have been exposed to asbestos can record the details of their exposure for their future reference. There is no minimum level of exposure required to add your details to the register.

If you have any questions regarding the register or would like to speak to someone at the Asbestos Safety and Eradication Agency, please call 1300 326 148.





YOUR CHILD NEED HELP WITH HOMEWORK?

Come along after school and a qualified teacher will help your child set up some good study habits. Suitable for primary and high school students – no bookings required.

Umina Beach Library every Tuesday from 3:00pm during school term. Ph 4304 7333



The Music Bus has opened their Term 4 enrolments and are inviting new students to apply. Classes offered are: Keyboard (K-Y6) · Ukulele (K - Y6) · Drums (Y1-Y6) · Guitar (Y2-Y6)

Lessons are: 30 minutes in duration - once per week held in the hi tech music classroom on wheels on UBPS site. Cost \$20.00 per week (\$22.00 drums), payable by the term on commencement



SUPPORT OUR LOCAL BUSINESSES

COASTAL LAUNDRIES & LINEN

Quality Laundry Services and Linen Hire
Let us take a few loads off your back!

ETTALONG LAUNDRETTE
15-17 Broken Bay Rd
Ettalong Beach NSW 2257

WOY WOY LAUNDRETTE
1/8 Chambers Pl
Woy Woy NSW 2256

service@coastallaundries.com.au • www.coastallaundries.com.au

Dancin' Mates!

ALL DANCE STYLES
All Ages & Abilities
Enrol Now for Dance Class
43 443 895 | @dancinmates

The Peninsula's Leading Dance School since 1994

PHYSIE AND DANCE AT ETTALONG IS BACK FOR 2023

CLASSES FROM 3 YEARS TO LADIES
FIRST TWO CLASSES FREE
ACTIVE KIDS AND CREATIVE KIDS PROVIDER
CONTACT FIONA ON 0401769985 FOR MORE INFORMATION

B.K.H Bookkeeping & PA

- Bank reconciliations / general bookkeeping
- Xero set up and training
- end-to-end payroll (Including STP)
- BAS/IAS Lodgment
- Once-off catch ups
- Online business coaching (if you're doing your own books, we can help!)
- And much more, check out our website for more services

Bree Haritos
0420 940 816
briana@bkhbookkeeping.com.au
www.bkhbookkeeping.com.au

TAX PRACTITIONERS BOARD
REGISTERED
BAS Agent
25826245

Facebook Instagram

WISEBERRY®
The Peninsula's Leading Real Estate Agency.

Ranked 1st of 62 agencies in our area, our industry expertise and highly trained sales and property management teams can help you achieve the best results.

For a current market update or free property appraisal, please get in touch on 4344 1122.

wiseberry.com.au/peninsula

KNOW YOUR COUNTRY
KNOWYOURCOUNTRY.COM.AU

THIS EMAIL COMES TO YOU FROM
GURINGAI & DARKINJUNG
COUNTRY