

UMINA BEACH PUBLIC SCHOOL WEEKLY NEWSLETTER

Term 3, Week 8
Tuesday 10 September, 2019



Kindergarten visit the Reptile Park

P&C Association

Meet every 2nd Tuesday of the month
All parents welcome.

School Canteen

8:45am – 12:00 noon.
Volunteers welcome.

Uniform Shop

Thursday 8:45am – 9:30am
Thursday 2:30pm – 3:15pm

Sydney Ave, Umina Beach NSW 2257

Phone (02) 4341 1630 Fax (02) 4344 3916

Email: umina-p.school@det.nsw.edu.au Website: www.umina-schools.nsw.edu.au

Office hours: 8:30am – 3:30pm

Report any suspicious behaviour toll free to School Security 1300 482737



Advertisers support our school – please support them

DIARY DATES

| | TERM 3, 2019 |
|----------------------|---|
| Wed 11 Sept | Year 6 Science Show Year 1 Rumbalara excursion (1P & 1H) |
| Thurs 12 Sept | Stage 2 Woolworths Cricket Blast Gala Day Years 5 & 6 Public Speaking ICAS Spelling |
| Fri 16 Sept | Public Speaking – whole school finals |
| Tue 17 Sept | ICAS English |
| Thurs 19 Sept | Kindergarten farm visit at BWSC Umina Campus ICAS Maths |
| Wed 25 Sept | Year 4 World of Maths incursion |
| Thu 26 Sept | Year 4 World of Maths incursion |
| Sat 9 Nov | P&C Photo Shoot Fundraiser |

From the Deputy Principal...

TELL THEM FROM ME SURVEY

Many thanks to those parents and carers who have completed the Tell Them From Me Survey over the last week. A reminder that you still have a chance to voice your say and give your ideas and perceptions on things that are happening in our school. The information collected anonymously will be used in the future planning and decision making in our school.

KINDERGARTEN ENROLMENT 2020

We have been conducting our Early Birds interviews with the Kindergarten students for 2020 and it has been wonderful to meet the bright and colourful characters that we will be welcoming into our school next year. Just a reminder that if you have a child, family relative, neighbour, etc... who needs to be enrolled for Kindergarten 2020 then you need to do that as soon as possible as our Early Birds School Visits will be beginning at the start of next term. It is essential that all children have their enrolment applications to the office before the end of term.

Please note - changes to the Department Enrolment Policy may not allow siblings living outside of Umina Beach PS zone to be enrolled from Term 4.

CRICKET GALA DAY

On the back of Australia's Ashes victory, it was great to see our Stage 3 students taking part in the Cricket Gala Day last Thursday at Umina Oval. The students represented our school well and performed with good sportsmanship. Our Stage 2 students will be participating in their Cricket Gala Day this Thursday.

EXCURSIONS

Our students have been involved in many excursions over the past week or so and there are many coming up before the end of term. Some of these excursions include: Kindy Reptile Park, Year 1 Rumbalara Environmental Excursion, Year 6 Canberra Camp, Year 5 Great Aussie Bush Camp and Kindy Farm Visit just to name a few. Many thanks to the organisational efforts of the teachers who work tirelessly to make these opportunities available to our students.

Have a great week!

Chad Tsakissiris -Deputy Principal

ART EXHIBITION

We are holding a student art exhibition on Wednesday 25 and Thursday 26 September in the school hall. Every student will have one piece displayed in the exhibition. We will be open for you and your family to visit from 8:30am – 9:15am and 3:15pm – 4:30pm on both days. A gold coin donation is required at the door and all artwork will be sent home with your child later in the year.



REPTILE PARK

What an amazing first excursion our Kindergarten students had last Wednesday! 120 students, along with their teachers and helpers, boarded 3 buses; first stop Bulgandry. Bulgandry is in the Brisbane Water National Park and is a special landscape, rich in ancient Aboriginal rock art of the Guringai people. The engravings there are more than 200 years old with many perhaps ten times that age.

From there, we travelled to the Australian Reptile Park. We wandered around in small groups and saw dingos, spiders, snakes, koalas, kangaroos, birds, crocodiles and much more. We were lucky enough to enjoy an animal show where we learnt about and touched a tawny frog-mouth, blue tongue and shingle back lizards, a koala and a HUGE python!

It was a big day with lots of opportunities for exploring and some playtime at the park. Our sincerest thanks go to the helpers who came along on the day and also to our Kindergarten families who made sure the students were on time and prepared for their adventure. Congratulations to all the students on their excellent behaviour. Finally, a big thank you to all of the Kindergarten teachers for making this a wonderful experience for our students.

Mrs Cameron - Organising Teacher

YEAR 6 SCIENCE SHOW

Year 6 will participate in the Fizzics Education Science Show on Wednesday morning. The show will complement our current science unit. The school is covering the cost of this event so there is no charge for students. I am sure they will enjoy the show, have fun and learn a lot!

Mr Jackson



SAVE THE DATE

Our P&C will be holding a fundraiser for the school on Saturday 9 November. The Family Photo Shoot will be held on school grounds – all family members (including the fur babies!) are welcome to come along and make memories. Great Christmas gift idea. All photos will be back to you way before Christmas. More information to come in the following weeks.

Advertisers support our school – please support them

TELL THEM FROM ME

We are coordinating the 'Tell them From Me' Survey again this term. This survey is completed by students, staff and parents/carers. The information that this survey gives us provides excellent data to inform future decision making and gives us a snapshot of how we are doing at school and what we can do to make our school even better. More details are located later in this newsletter.

Have a great week,

Chad Tsakissiris - Deputy Principal

KINDERGARTEN 2020

We are currently taking **enrolments for Kindergarten 2020**. If you have a child starting at Umina Beach Public School next year, please call into our office and collect an enrolment pack.

Our **Early Birds Transition Program** begins on Wednesday 16 October (Week 1, Term 4) and continues for the following 3 weeks – Wed 23 Oct, Wed 30 Oct and Wed 6 November. There will be a morning group from 9:30-11:00am and an afternoon group from 12:30-2:00pm. We are really looking forward to meeting our new Kindergarten students.

We are also holding **Kindergarten student interviews**. These interviews are a 10 minute meeting with a member of the staff in relation to your child beginning school. The meeting will be attended by parents/carers, a staff member and the child.

The aim of the meeting is for us to get to know your child a little better before starting the Early Birds orientation program by addressing some of the following questions:

- Personal interests
- What motivates your child
- Friendship networks
- Socialisation skills
- Medical needs
- Learning needs
- Preschool experience

To make an appointment please go to the following website and register yourself and select the timeslot that best suits your family calendar.

<https://www.schoolinterviews.com.au/code?code=dzrt7>

Interviews will be conducted on the following dates (timeslots vary):

Wednesday 11 September

Liza Moulton - Relieving ES1 Assistant Principal

CANTEEN NEWS

| | |
|-------------|---------------------------------------|
| Wed 11 Sept | Sue P |
| Thu 12 Sept | Jodie D, David A |
| Fri 13 Sept | Stephanie W, Ana M HELP NEEDED |
| Mon 16 Sept | Eileen D, Zoe B |
| Tue 17 Sept | Heather M |

Have a healthy happy week.

Deb Elliott - Canteen Supervisor

Tell Them From Me Survey – 2019

Student Survey Information

The *Tell Them From Me* student survey (Term 3, 2019)

We are delighted that this term, our school, like many other public schools in the state, will participate in a Department of Education initiative: the *Tell Them From Me* student feedback survey. The survey measures factors that are known to affect academic achievement and other student outcomes. The focus of the NSW-wide survey is on student wellbeing, engagement and effective teaching practices.

You may remember that our students also participated in a *Tell Them From Me* student survey in Term 1 this year. Asking students to complete the survey twice in one year allows us to identify trends in student responses as well as track engagement and motivation across the school year.

The survey is a great opportunity for our students to provide us with valuable and quick feedback on what they think about school life, how engaged they are with school and the different ways that teachers interact with them. More than 6,300 schools in Australia and around the world have used *Tell Them From Me* to survey 5.4 million students. Capturing the voices of our students will help improve how we do things at our school.

More information about the survey is available at: <http://surveys.cese.nsw.gov.au>

I want to assure you that the survey is confidential. The survey is conducted online and will typically take less than 30 minutes to complete. It will be administered during school hours between 26 August and 25 October. Participating in the survey is entirely voluntary.

A consent form and FAQs for parents/carers about the survey is being sent home with students. If you **do not** want your child or children to participate, please return the form to school by **Friday 6 September**. Copies of the form and FAQs are available from: <http://surveys.cese.nsw.gov.au/information-for-parents>.

Parent Survey Information

This Term, our school will be participating in the *Partners in Learning* parent survey, another part of the *Tell Them From Me* suite of surveys (student, teacher and parent surveys) on student engagement. The survey asks parents and carers questions about different factors that are known to impact on student wellbeing and engagement.

Running this survey will help our school understand parents' and carers' perspectives on their child's experience at school. These include: communication between parents/carers and staff, activities and practices at home and parent/carer views on the school's support of learning and behaviour. This valuable feedback will help our school make practical improvements.

The survey is conducted entirely online on smartphones, iPads, tablets, laptops or computers. The survey will typically take 15 minutes or less to complete and is completely confidential. The parent survey will be conducted between 26 August and 25 October. Although participating in the survey is entirely voluntary, your responses are very much appreciated.

More information about the survey is available at: <http://surveys.cese.nsw.gov.au>. To access the survey for our school go to:

<http://nsw.tellthemfromme.com/uminabeachps>

The survey is available in 23 languages.

COMMUNITY NEWS



SCHOOL HOLIDAY TENNIS CAMP NOTICE

Where: UMINA TENNIS, Umina

1st WEEK OF THE HOLIDAYS

When: Monday 30th Sept - Friday 4th Oct

Time: 9am-3pm

Cost: Wk \$80, ½ Day Wk \$50, Full Day \$25, ½ Day \$15

BEFORE & AFTER CAMP CARE NOW AVAILABLE 7AM-6PM \$150 wk.

Included: Racquets, Sausage Sizzle Thursday, Prizes Friday

The camp will be predominately tennis with other activities such as soccer, cricket, basketball etc to keep the children occupied. The camps are held wet or fine with indoor activities provided. No booking needed just turn up on the day. Lunch orders available.

0410 828 278.



ETTymALONG CREEK LANDCARE

Do you love our local bushland, creeks and wildlife?

Ettymalong Creek Landcare has been carrying out bushcare work to restore and protect the native vegetation and habitat of Umina since 1994. We work on the bushland area along Ettymalong billabong next to Umina oval.

If you would like to know more about the native bushland of this area or would like to join us at our monthly work days on the third Sunday of each month 8am - 11am, get in touch at ettymalonglc@internode.on.net or visit our web site at:

<http://www.landcare.nsw.gov.au/groups/ettymalong-creek-landcare>.

Think Globally Act Locally

UPCOMING EVENTS

Supporting the
Westpac Rescue
Helicopter Service

MELBOURNE CUP LUNCHEON

TUESDAY 5 NOVEMBER 2019
12.30PM - 4.00PM | \$85 PER PERSON
REEF RESTAURANT TERRIGAL



SAIGE
ACCOUNTANTS & FINANCIAL PLANNERS

HIGH TEA BY THE SEA

SUNDAY 17 NOVEMBER 2019
2.00PM - 4.30PM | \$55 PER PERSON
SEASALT RESTAURANT
CROWNE PLAZA TERRIGAL



SOUTH END SOCIAL
COFFEE LAB • BAKERY • FIRE WINE

For more information and to book please visit: www.rescuehelicopter.com.au/events or phone 4363 9746



Advertisers support our school – please support them

The School Opal card

The School Opal card gives eligible students free or discounted travel between home and school using metro, train, bus, ferry and light rail services you nominate in your application.



Who can apply?

To be eligible for a School Opal card, students may need to live a minimum distance from their school:

Years K-2 (Infants)

There's no minimum distance.

Years 3-6 (Primary)

More than 1.6km straight line distance or at least 2.3km walking.

Years 7-12 (Secondary)

More than 2.0km straight line distance or at least 2.9km walking.



If you live too close to be eligible for free travel, you may still qualify for a School Term Bus Pass, which offers travel on buses between home and school at a discounted rate for the whole school term.

Who needs to apply

A new application is only required if the student has not had a School Opal card before.

If the student already has a School Opal card and is changing schools, campuses or home address, you will need to update their Opal card for the new school year before mid-December at

apps.transport.nsw.gov.au/ssts



How to apply

Applications for next year open at the start of Term 4 this year.

Step 1

Once the new school has confirmed your child's enrolment, complete the application at apps.transport.nsw.gov.au/ssts

Step 2

The school endorses your application.

Step 3

Once Transport for NSW has approved the application, a School Opal card will be sent to the address provided on the application.



A parent or guardian must apply for students 15 years and under. Students 16 years and over can apply for themselves.

Better together

The School Opal card is only for travel to and from school. So it's a good idea to get a Child/Youth Opal card for travel after hours, on weekends or during school holidays.

Child/Youth Opal card benefits

- Concession fares across the Opal network
- Half-price travel after eight paid journeys each week*
- \$1 transfer discount for every transfer between modes (metro/train, ferry, bus or light rail) as part of one journey within 60 minutes from the last tap off†
- Set auto top up and link it to your credit or debit card so there's always enough value on the card to travel.

Find out more at transportnsw.info/opal or pick one up from an Opal retailer.

To find a retailer in your area visit transportnsw.info/opal-retailers



Secondary students aged 16 and over can travel with a Child/Youth Opal card when carrying a NSW/ACT Senior Secondary Student Concession Card, available from school and TAFE offices.

* Excluding Sydney Airport station access fee.

† The Opal Transfer Discount doesn't apply when transferring between light rail and Sydney Ferries.



For kids who love to learn!

MindCamp's weekend enrichment program provides engaging two day, activity-based courses for primary school children in Years 1-6

You won't believe learning can be this much fun!

| Years 1/2 | Years 3/4 | Years 5/6 |
|--|--|--|
| <p>Greek Mythology</p> <p>If you love writing, imagining adventures and great love stories, then this course is perfect for inspiring young writers. Using the epic adventure, The Odyssey to enter the realm of Greek Mythology, our writers will have fun writing scripts, making costumes and finally performing their extraordinary ending to The Odyssey in front of an audience.</p> <p>The Science of Planet Earth</p> <p>Earthquakes, volcanoes, cyclones and tsunamis: Investigate what natural phenomena our amazing planet can endure. As budding geologists, you will examine the structure of our planet by simulating earthquakes, volcanoes, and erosional forces. You will also work on developing key scientific skills, such as questioning, observation, data recording, communicating and comparing. Investigate what geological events trigger natural disasters and dive deep beneath the earth's core to discover what lies beneath.</p> <p>Superhero School</p> <p>Would you like to create your own superhero and do battle against evil forces? In this course you will research and create your own superhero and then act out your amazing scenes. Learn what makes a scene action packed and how to create a character worth fighting for. In this fun, fast paced course, both boys and girls will use their creative skills to make costumes and storylines that will culminate in an heroic performance to be remembered.</p> | <p>Chemistry Ready, Set, React!</p> <p>Bubble flubber pop! You will observe the physical and chemical changes that drive the scientific world. Start your very own lab book to begin hypothesising, investigating, recording and analysing the results from your scientific enquiries. Investigate what causes bread to rise, make polymers, explore the science of ice cream, and perform a forensics experiment to determine the identity of various substances. Finish off the weekend by planning and performing a chemistry "magic" show.</p> <p>Riotous Robotics</p> <p>Do you love robotics? Build and program playful LEGO designs with movement and sound using LEGO WeDo hardware and software. Our LEGO WeDo robots are equipped with sensors that allow them to act like real robots. Use your creativity to design, build and program your own robots. Get ready for an awesome two days of problem solving and engineering fun!</p> <p>Palaeontology – Digging Up Dinosaurs</p> <p>Spend the weekend as a palaeontologist and unearth new insights into the age of reptiles. Learn how tricky it is to excavate and identify fossils and make six different kinds of fossil forms of your own. Investigate, dinosaur facts and theories and discover how the world looked in prehistoric times. You will be digging, dusting, identifying and recording your findings. You won't stop until you find the answers.</p> | <p>Order in the Court</p> <p>In this fascinating course presented by a lawyer, you will find yourself in a mock trial that involves familiar characters from the Harry Potter book series. Develop a lifelong appreciation for the legal system through hands-on participation in all aspects of a court case. Did Harry Potter assault Draco Malfoy? Learn to analyse information, think logically, prepare an argument, effectively question witnesses, and convincingly present evidence. You might be a lawyer, member of the jury or witness to the crime. All rise, the court is now in session.</p> <p>Magnificent Machines</p> <p>Using LEGO EV3 Mindstorm robotics, you will learn to build and program machines that can perform a variety of entertaining and increasingly more challenging tasks. Activities include Self Driving Car Challenge, Rescue Missions, Sumo battles and many more. We recommend this course for beginners and intermediate levels of robotics experience. Get ready for a weekend of absorbing engineering and high energy, hands on fun.</p> <p>CSI – Fascinating Forensic Science</p> <p>In this course you will learn how to solve a forensic mystery using science, teamwork and critical thinking. Clues are everywhere. You will need to investigate fingerprints and blood typing, hair and fibre analysis, and don't forget to sketch and photograph the crime scene. Collect your evidence, discuss with your team and use your new scientific knowledge to come up with the answers. We are depending on you!!</p> |

Enrol online today at mindcamp.com.au

October Sat 19- Sun 20 | Lisarow High School | 2 The Ridgeway, Lisarow, NSW



GIFTED AND TALENTED INFORMATION

Mind Camp's Gifted & Talented weekend enrichment program is open to students in Years 1 – 6. The camp offers students opportunities to experience courses that stimulate higher order thinking skills and problem solving skills across a wide range of topics.

The flyer above provides the website to visit should you be interested in enrolling your child. Please note that the camp is not associated with our school and it is a parent responsibility to enrol and follow-up any camp requirements.

Advertisers support our school – please support them

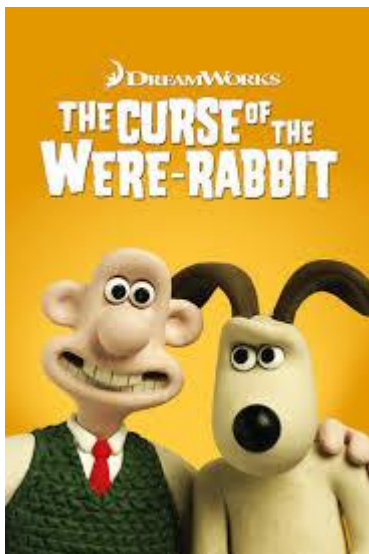
FREE FAMILY MOVIE NIGHTS IN THE PARK

Pack your picnic blankets and supper snacks for a FREE family movie night in the park. Arrive from 5:30pm screenings will start at nightfall. Dress up as your favourite character from the films for a chance to win a gift voucher from Jasmine Greens. Gold coin donations are welcomed to help fund future events. Jasmine Greens Park kiosk will be open selling food and drinks.

In the event of bad weather, the screening will be put back to the **following month**. Follow event updates on the Jasmine Greens Park Kiosk Facebook page @parkkiosk.



Saturday Oct 12



Saturday Nov 2



Saturday Dec 7

ADVERTISE WITH US

**REFER A FRIEND
AND UMINA PUBLIC SCHOOL
COULD EARN \$500**

Every time **Wiseberry Peninsula** lists & sells a property for someone who mentions that they came to us because of Umina Public School, the school receives \$500

TROY HOWE 0415 928 216
Wiseberry Peninsula 4344 1122



CO-WORKING SPACE | PRIVATE OFFICES
MEETING ROOM |

COMMON N WEST

Corner West & South St Umina

Book your space now:
space@commononwest.com.au
www.commononwest.com.au



*Celebrating 25 years
of the best in quality dance training
right here in Umina Beach*



Dancin' Mates! *Performing Arts Dancing School*

ENROL NOW FOR 2019
Call us on 43443895
Visit www.dancinmates.com.au
Email dancinmates@yahoo.com.au
Or come up and check out our beautiful studios on West St

*All ages!
All styles!
All welcome!*

DANGINALITY

www.dancinality.com.au Ph.4342 1195

RAD CLASSICAL BALLET – BAL TAP – JAZZ – HIP HOP – CONTEMPORARY & LYRICAL – DRAMA & MUSICAL
THEATRE – ACRO – CHEER – BURLESQUE – BODY CONDITIONING CLASSES

SPECIALIZED PRE-SCHOOL DANCE PROGRAM – BOYS ONLY CLASSES – DANCE & FITNESS CLASSES FOR
ADULTS – EISTEDDFOD & EXAMINATION OPPORTUNITIES – NOW OFFERING CERT II & III IN DANCE

HIGHLY QUALIFIED TEACHING FACULTY – FULLY EQUIPPED STUDIOS – A HOME AWAY FROM HOME

**MAKE YOUR MOVE... TO DANGINALITY... THE
PENINSULAS "GO TO" DANCE STUDIO!**

STRATFORD MUSIC
LESSONS FOR ALL AGES
**Piano Guitar Drums Vocals
Violin Viola Ukulele Bass**



Enrol Now  **Save \$100**

Ph: 4344 5809
81 Blackwall Rd Woy Woy
stratfordmusic.com.au

FRESH FRUIT N VEG BOXES



- * Weekly for the Coast
- * Sydney Markets direct
- * Hand picked and packed
- * FREE delivery
- * Fresh and convenient
- * Affordable & saves time
- * Australian Farmers only

TO ORDER
0455 043 998

www.coastalgourmet2u.com.au

Find us on:  [facebook](https://www.facebook.com/coastalgourmet2u)



Advertisers support our school – please support them